



HOPE TOUN

Most Powerful Harbour Tug in the World

GENERAL

Classification	Bureau Veritas Department of Transport Class VII 100A1 Tug + LMC UMS FiFi 1
Flag	British
Owner	INEOS FPS
Builder	C.N Santodomingo, SA Vigo Spain
Built	1997
Fire-Fighting	Full FiFi 1 (2400 m3/hr)

DIMENSIONS

Length overall	43.50m
Beam overall	13.50m
Max Draught	6.74m
Gross tonnage	947t

PERFORMANCE

Bollard pull	124t
Max Speed	14 kn

PROPULSION SYSTEM

Main engines	2 x Bergen KVMB-16
Total power	2 x 3565kw (4845bhp) at 825rpm
Azimuth thrusters	Kamewa Aquamaster US 5001/4600 CP
Propeller diameter	3200mm

TANK CAPACITIES

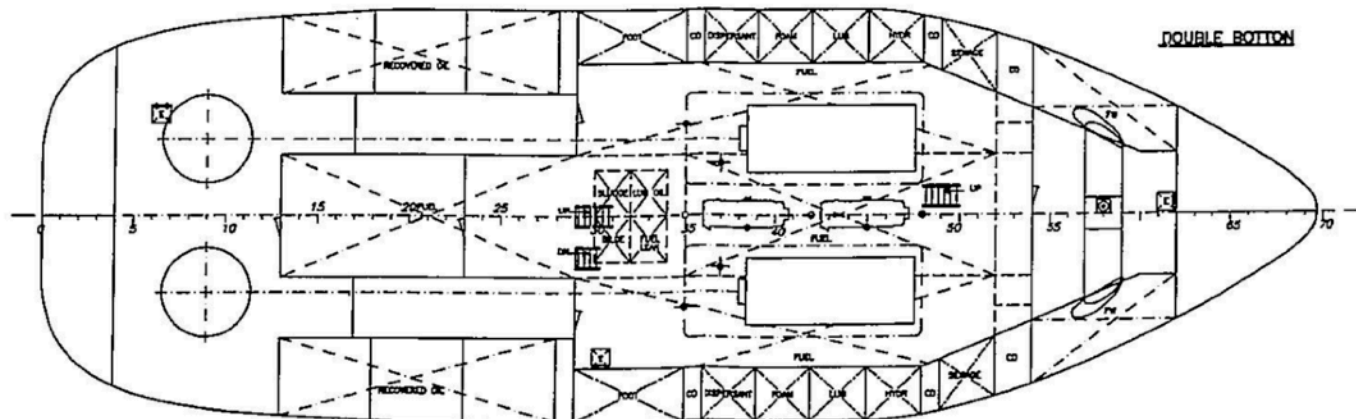
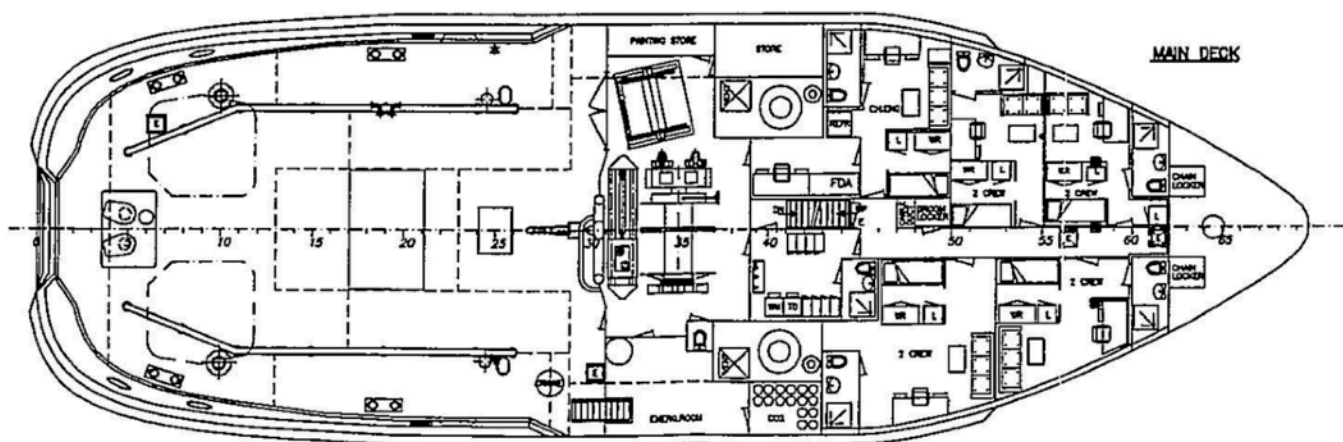
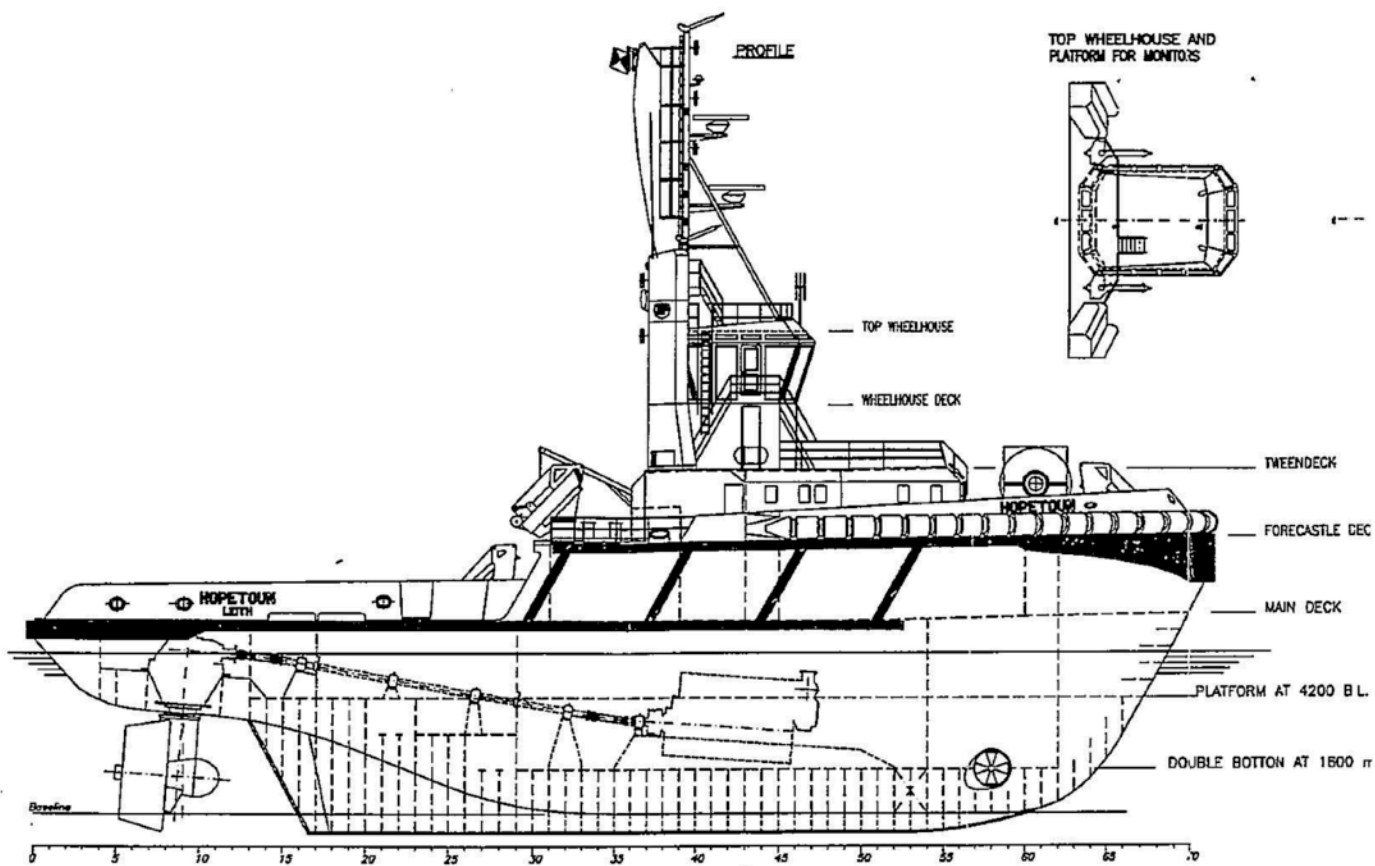
Fuel Oil	282.00 m3 (95%)
Lub Oil	30.5 m3
Fresh Water	62.5 m3
Foam	32.9 m3 Aquafilm AFFF 3%

AUXILIARY EQUIPMENT

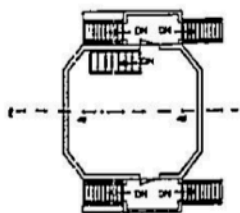
Generator sets	2 x Volvo PENTA TMD 102A 380V, 50HZ, 110kW
----------------	---

DECK EQUIPMENT

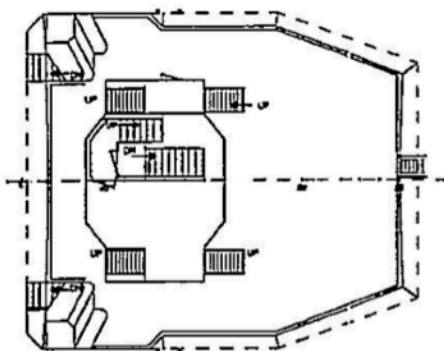
Fore Winch	2 x Karmoy 250t Brake Holding Force
Tow Hook	Mampaey DCX 70/100 SWL 150t
Capstan	Karmoy type 162505 4.2t
Main Crane	Heila HLRM65S 3.5t @ 12m
Crane Aft	Heila HLRM35S 2t @ 12m



WHEELHOUSE DECK



TWEENDECK



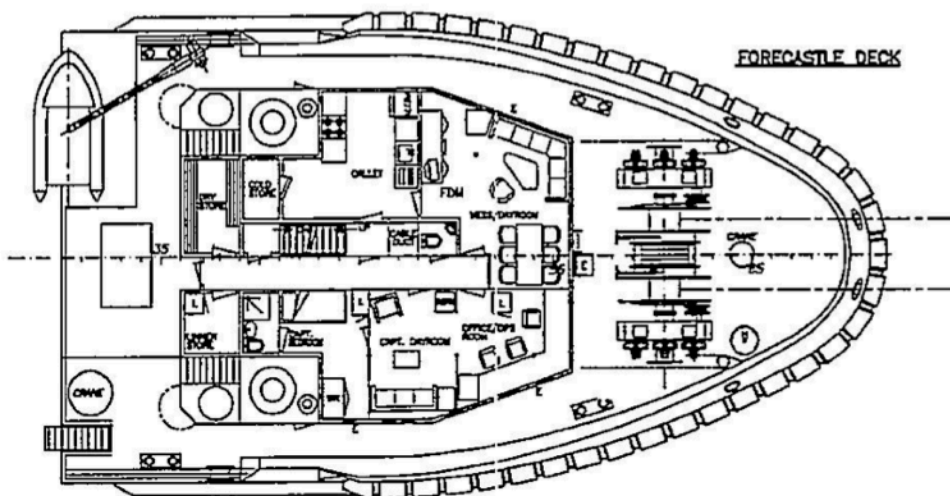
DECK

STEEL DECK

DECK

200 B.L.

1600 mm B.L.



CARACTERISTICAS / MAIN PARTICULARS

ESLORA DE ESCANTILLONADO / LENGTH SCANTLING	39.29 m.
ESLORA ENTRE PERPENDICULARES / LENGTH PP	42.00 m.
ESLORA TOTAL / LENGTH OVERALL	43.50 m.
MANGA DE TRAZADO / BEAM mid	13.50 m.
ALTURAS DE CUBIERTA / DEPTH DESIGN	7.00/9.80 m.
CALADO DE TRAZADO / DRAFT DESIGN	5.80 m.
CALADO DE ESCANTILLONADO / DRAFT SCANTLING	5.95 m.

MOTORES PRINCIPALES / MAIN ENGINES 2 x 3565 KW / 825 rpm.

CUADERNAS ESPACIADAS / FRAME SPACING 600 mm.

BRUSCA DE CUBIERTA / DECK CAMBER 270 mm.

CLASE / CLASS

LRS + 100A1 Tug + LMC UNS
 FFI 1 / with waterpry;
 Or Recovery Ship Flash
 point above 60°C.

PLATFORM AT 4200 mm B.L.

