



QUEENSFERRY

HIGH-PERFORMANCE AZIMUTH STERN DRIVE TUG

GENERAL

Classification	Bureau Veritas I✕HULL✕MACH Fire-fighting Escort Tug - Unrestricted Navigation
Flag	British
Owner	INEOS FPS
Builder	Sanmar
Built	2020
Fire-Fighting	Full FiFi 1 (2400 m3/hr)

DIMENSIONS

Length overall	24.40m
Beam overall	11.25m
Max Draught	5.5m
Gross tonnage	217t

PERFORMANCE

Bollard pull	70t
Max Speed	12 kn

PROPULSION SYSTEM

Main engines	2 x Catapillar 3516c
Total power	4198kw (5630bhp) at 1600rpm
Azimuth thrusters	Rolls Royce US 255/3600 FP
Propeller Diameter	2600mm

TANK CAPACITIES

Fuel Oil	74.00 m3
Fresh Water	22.40 m3
Foam	4.40 m3
Ballast Water	31 m3

AUXILIARY EQUIPMENT

Generator sets	2 x Caterpillar C4.4 400v 123.75KVA 50Hz
----------------	--

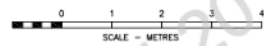
DECK EQUIPMENT

Fore Winch	DMT TW-H250kN 1870kN Brake Split Drum
Tow Hook	Data Hidrolic DTH 70-130P SWL 700kN (70t)
Capstan	Data Hidrolic DHC 5000 SWL 50kN (5t)
Crane	Heila - 1.2t at 10.97m

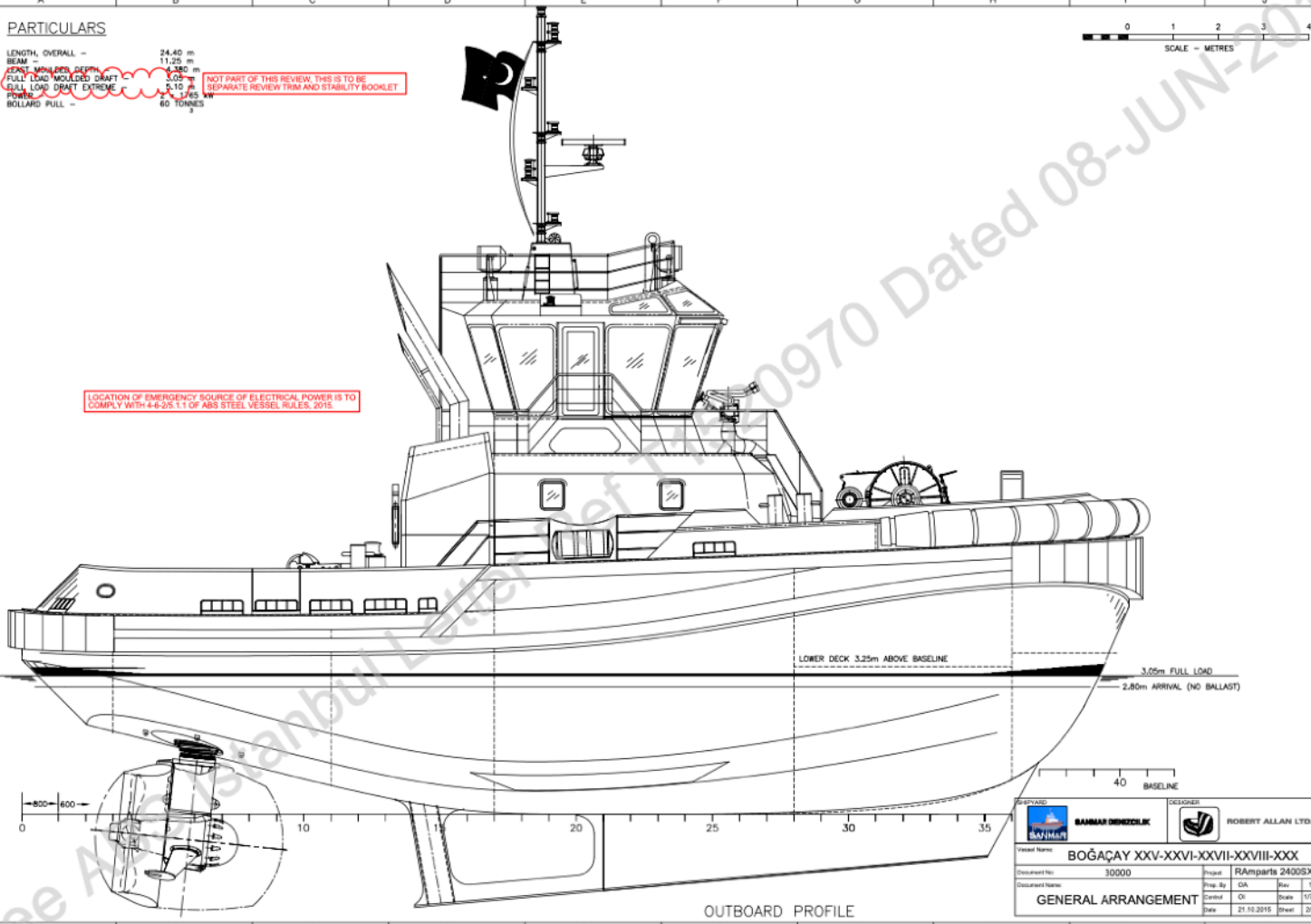
PARTICULARS

LENGTH OVERALL = 24.40 m
 BEAM = 11.25 m
 DEPT. MAIN DECK = 4.280 m
 FULLY LOAD MOLDED DRAFT = 3.05 m
 FULL LOAD DRAFT EXTREME = 5.10 m
 POWER = 2 X 1365 KW
 BOLLARD PULL = 80 TONNES

NOT PART OF THIS REVIEW, THIS IS TO BE SEPARATE REVIEW TRIM AND STABILITY BOOKLET

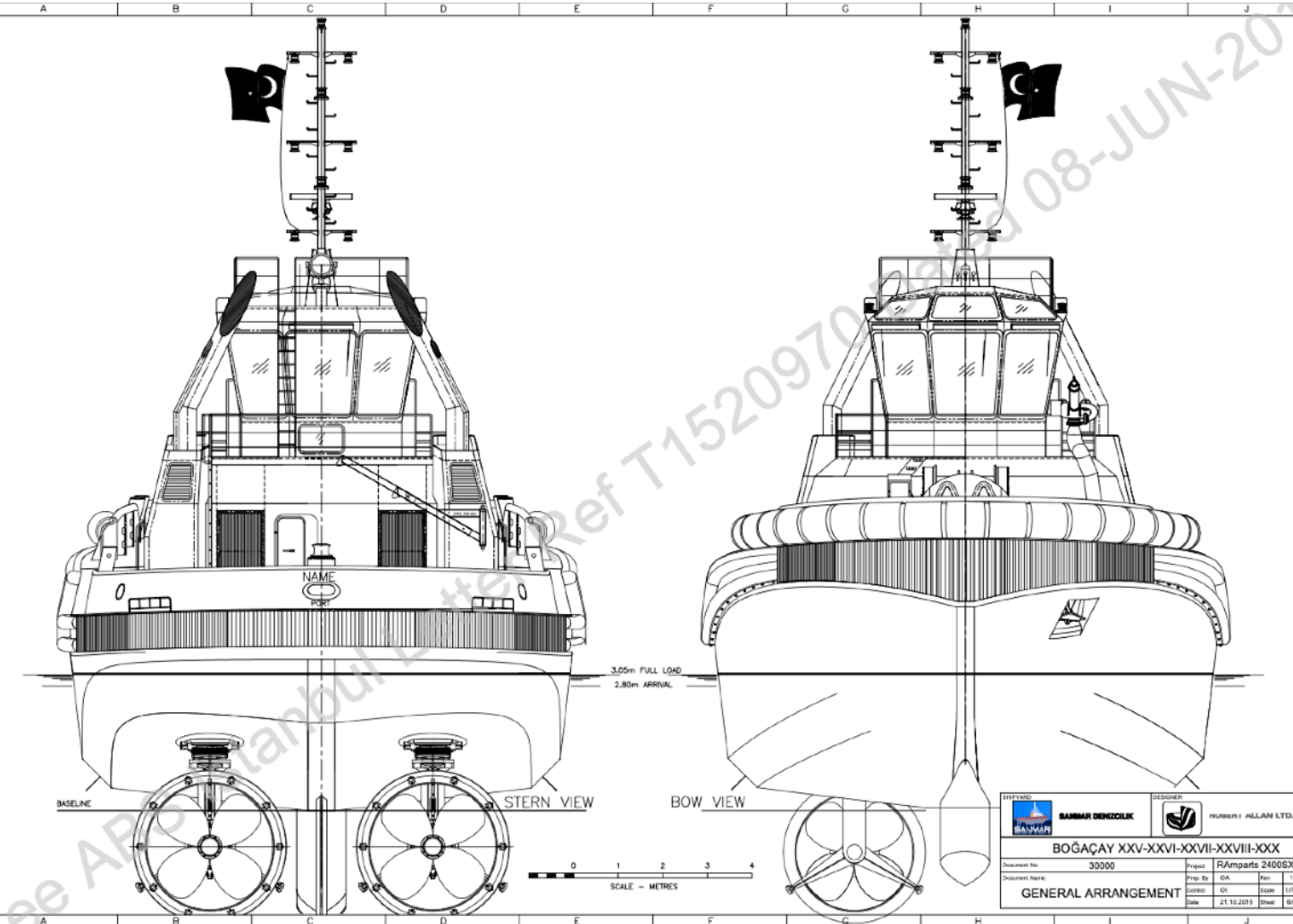


LOCATION OF EMERGENCY SOURCE OF ELECTRICAL POWER IS TO COMPLY WITH 4-6-2/5.1.1 OF ABS STEEL VESSEL RULES, 2015.



OUTBOARD PROFILE

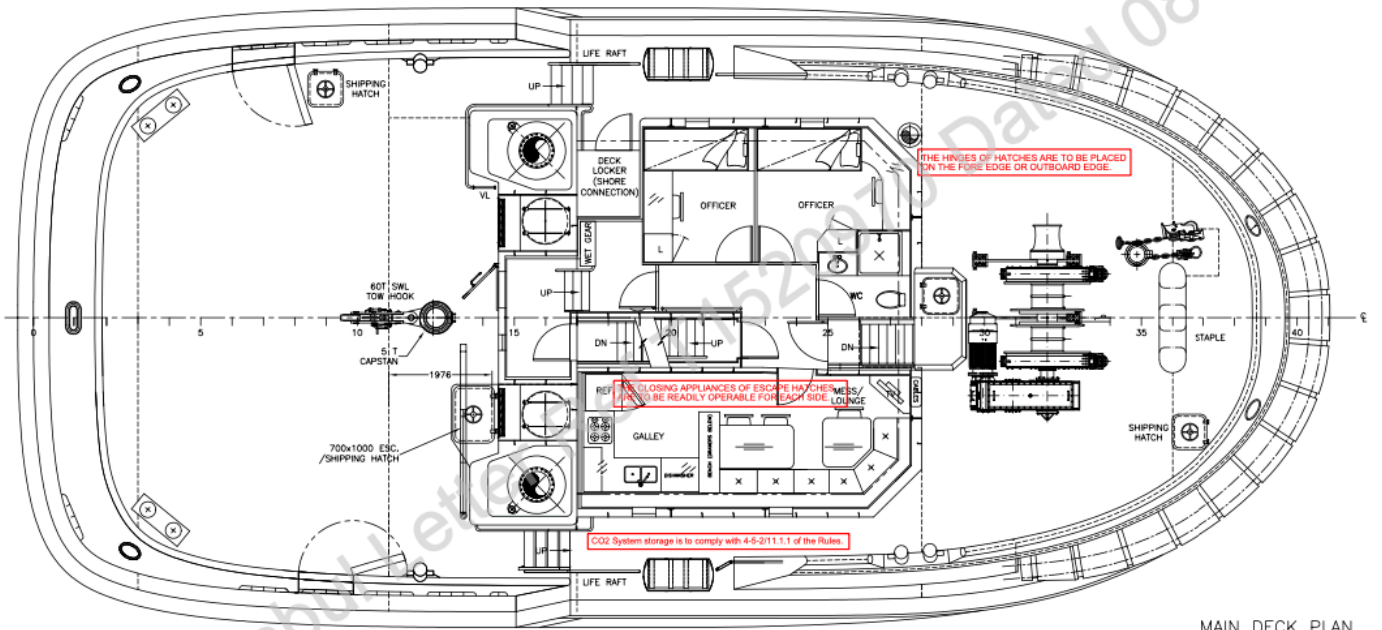
Vessel Name: BOĞAÇAY XXV-XXVI-XXVII-XXVIII-XXX			
Document No:	30000	Project:	R/Amparts 2400SX
Prep. By:	DA	Rev:	1
Control:	DA	Scale:	1/75
Date:	21.10.2015	Sheet:	2/5
GENERAL ARRANGEMENT			



SCALE - METRES

Vessel Name: BOĞAÇAY XXV-XXVI-XXVII-XXVIII-XXX			
Document No:	30000	Project:	R/Amparts 2400SX
Prep. By:	DA	Rev:	1
Control:	DA	Scale:	1/75
Date:	21.10.2015	Sheet:	3/5
GENERAL ARRANGEMENT			



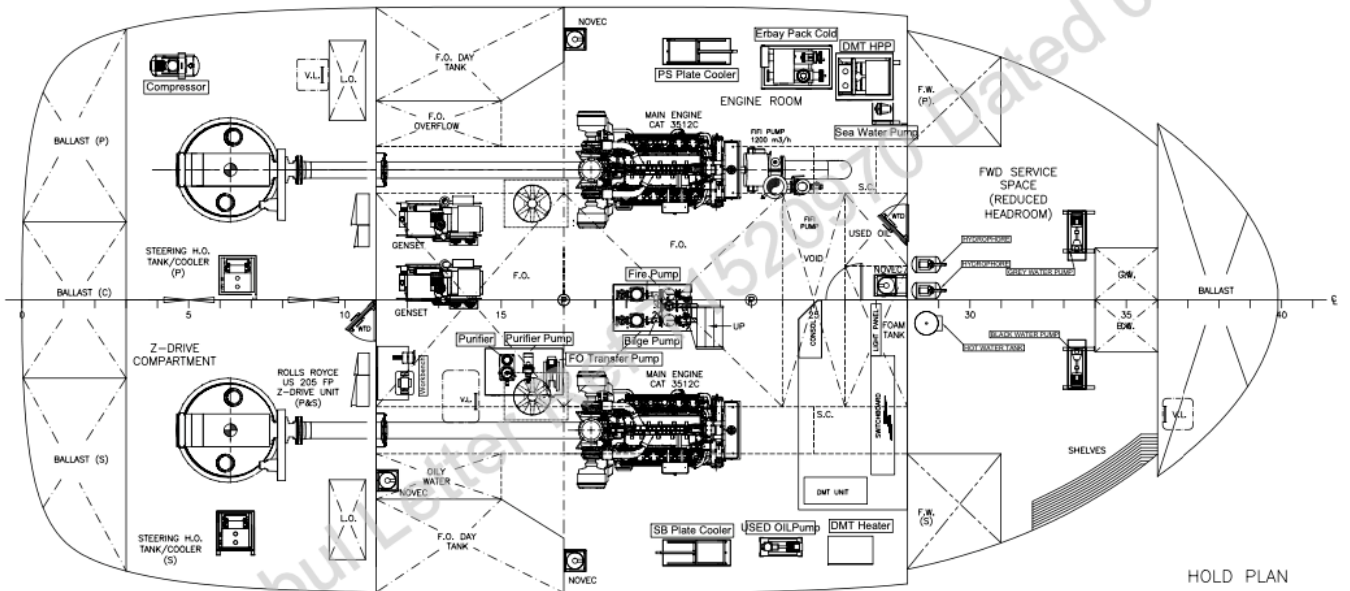


MAIN DECK PLAN

The closing appliances of escape openings are to be of a type that is operable from each side. The maximum force needed to open the hatch cover is not to exceed 150 N (15.3 kgf, 33.7 lbf). The use of a spring equalizing, counterbalance or other suitable device on the hinge side to reduce the force needed for opening is acceptable, in accordance with 3-2-12/23.5 of the Rules.



SINMAR		ROBERT ALLAN LTD.	
Vessel Name: BOĞAÇAY XXV-XXVI-XXVII-XXVIII-XXX			
Document No:	30000	Project:	RAMparts 2400SX
Document Name:	GENERAL ARRANGEMENT	Prep. By:	OA
		Control:	Ol
		Date:	21.10.2016
		Scale:	1/75
		Sheet:	4/6



HOLD PLAN

Watertight doors are to be provided with means of indication locally and on the bridge whether they are open or closed. A notice is to be affixed to each of each closing appliance to the effect that is not to be left open.



SINMAR		ROBERT ALLAN LTD.	
Vessel Name: BOĞAÇAY XXV-XXVI-XXVII-XXVIII-XXX			
Document No:	30000	Project:	RAMparts 2400SX
Document Name:	GENERAL ARRANGEMENT	Prep. By:	OA
		Control:	Ol
		Date:	21.10.2016
		Scale:	1/75
		Sheet:	5/6

